



FENIX
INTEGRATED
SOLUTIONS

KITCHEN SINKS



UNDERMOUNT
INSTALLATION, CARE
AND MAINTENANCE MANUAL

1. INTRODUCTION

FENIX® is a new generation of innovative materials for interior design for a broad range of vertical and horizontal applications such as in kitchens. In order to further the aesthetic harmony of FENIX, FENIX INTEGRATED SOLUTIONS offer a new FENIX sinks collection. The sinks collection is especially developed to complement FENIX worktops.

2. CARE AND MAINTENANCE

Cleaning the sink can help maintain its beauty and cleanliness. Although the non-porous surface prevents liquids from penetrating inside the material, it is preferable to remove them immediately using a soft non-abrasive sponge and a common dish soap, rinsing the surface and drying carefully using a microfibre cloth.

In case of stubborn stains on light-coloured sinks, use a solution of bleach and lukewarm water (in ¾ and ¼ ratio), leaving it to act for about 8 hours (it is advisable to carry out this cleaning activity at night), rinsing thoroughly and then carefully drying the entire surface with a soft microfibre cloth. If the stains persist, the operation can be repeated once or twice more.

In case of stubborn stains on dark-coloured sinks, use common dish soap directly on the stain and with a soft non-abrasive sponge clean with small circular movements. Rinse with lukewarm water and carefully dry the entire surface with a microfibre cloth. If the stains persist, the operation can be repeated once or twice more.

In case of limescale stains, use a non-corrosive limescale remover diluted with lukewarm water. Distribute the solution homogeneously over the entire surface of the sink. Then, using a soft non-abrasive sponge make small circular movements, and leave the limescale remover to have effect for a few minutes (carefully following the instructions for use on the limescale remover label). Rinse with lukewarm water and carefully dry the entire surface with a microfibre cloth.

Not observing the care and maintenance instructions contained in this manual may invalidate the warranty.

3. WARNINGS AND PRECAUTIONS

The following precautions must be taken into account:

- do not cut or mince directly on the sink surface because it could irreparably get scratched (it is advisable to always use a cutting board);
- avoid accidental impacts that could cause non-restorable micro-injuries;
- do not place incandescent objects such as coffee makers, hot pans, frying pans, pots or other heat sources directly on the surface of the sink: they could form discoloration and/or injury stains;
- avoid pouring boiling liquids directly into the sink without first opening the cold water tap and filling the bottom at least 1cm as this could damage the product. Pouring liquids in excess of 70°C (thus including boiling liquids) directly into the sink without first opening the tap can damage the sink;
- in order to prevent the formation of limescale stains, we recommend a descaling treatment at least once a week, an operation recommended especially for dark-coloured sinks.

4. INSTALLATION

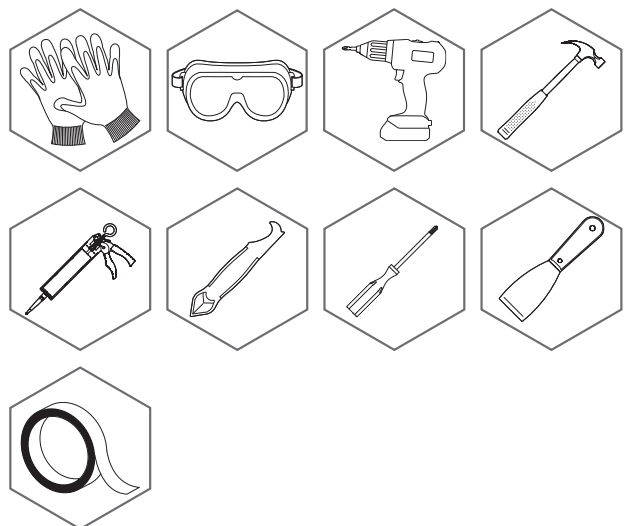
⚠ CAUTION

The installation of a sink requires professional and experienced workmanship. These installation guidelines give general recommendations in respect of the installation of an integrated undermount sink within FENIX SOLID worktops. Alternative installation methods (such as flushmount) are complex installation processes and must only be performed by professional, experienced installers with the required professional tools and machinery (such as a CNC machine). We are not responsible for the sink or worktop in case of any damage during installation.

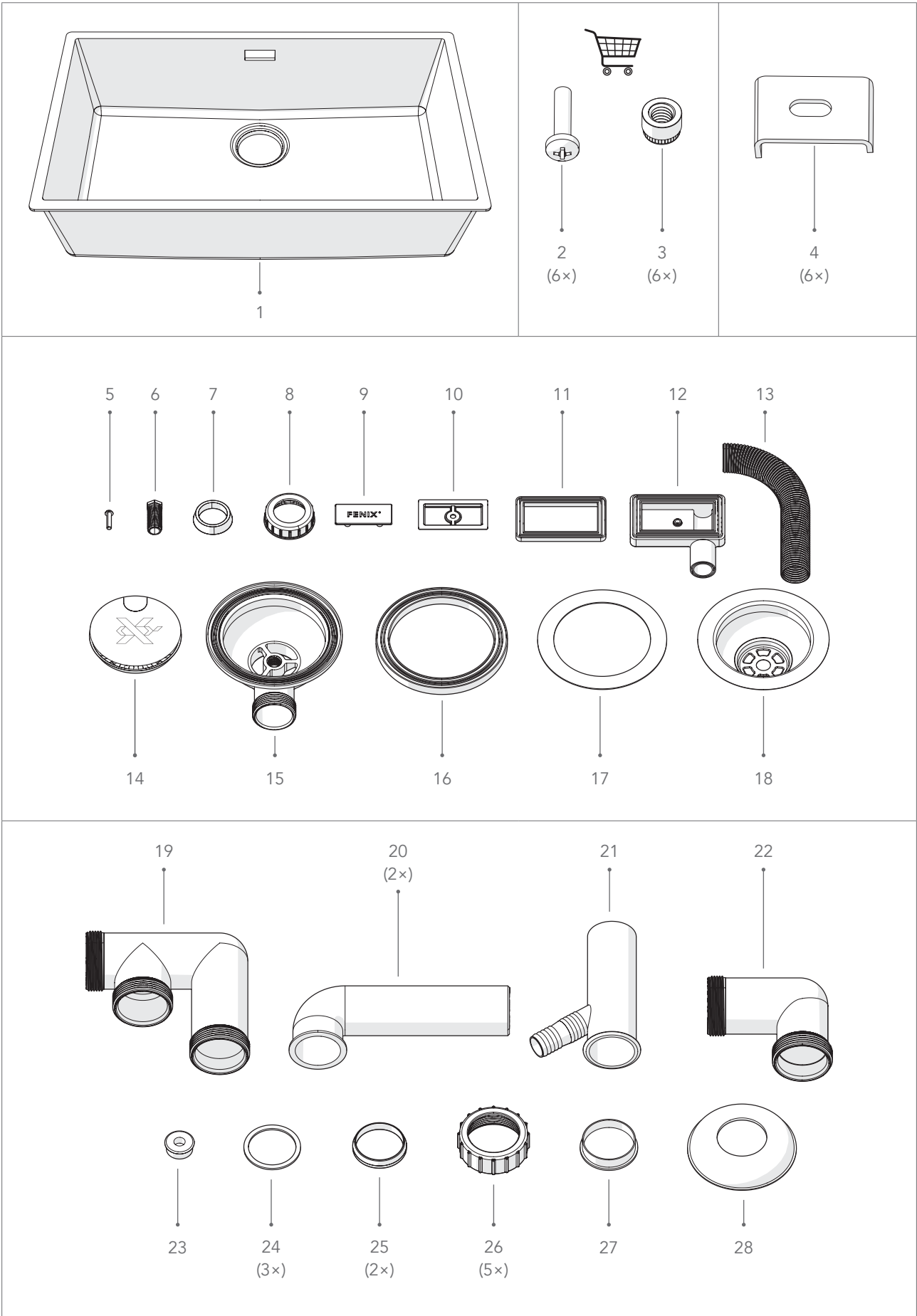
4.1 CHECK THE CONTENTS

Check the packages for any damaged or missing parts using the overview on page 3. If any parts are missing, please contact your reseller.

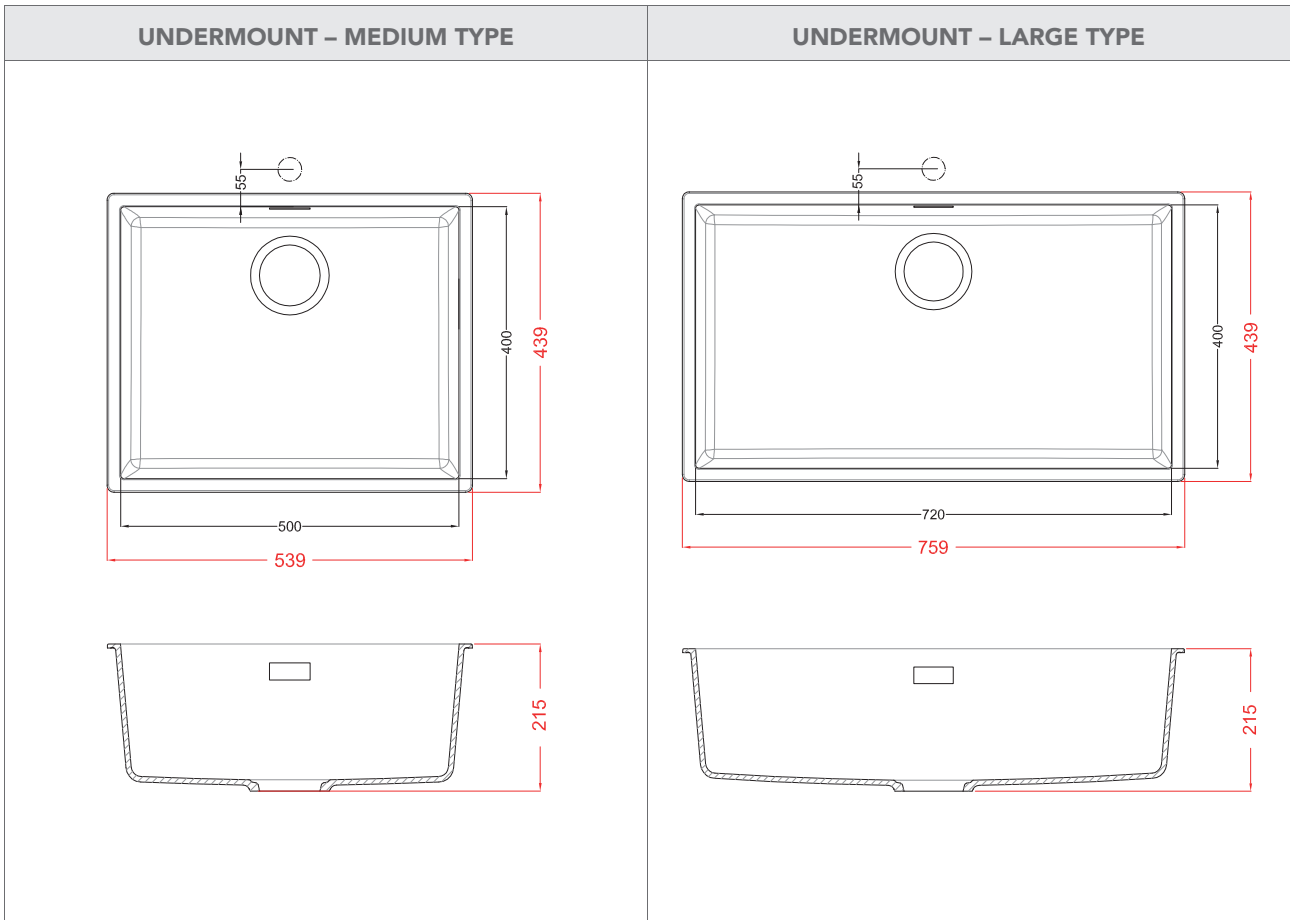
4.2 TOOLS REQUIRED



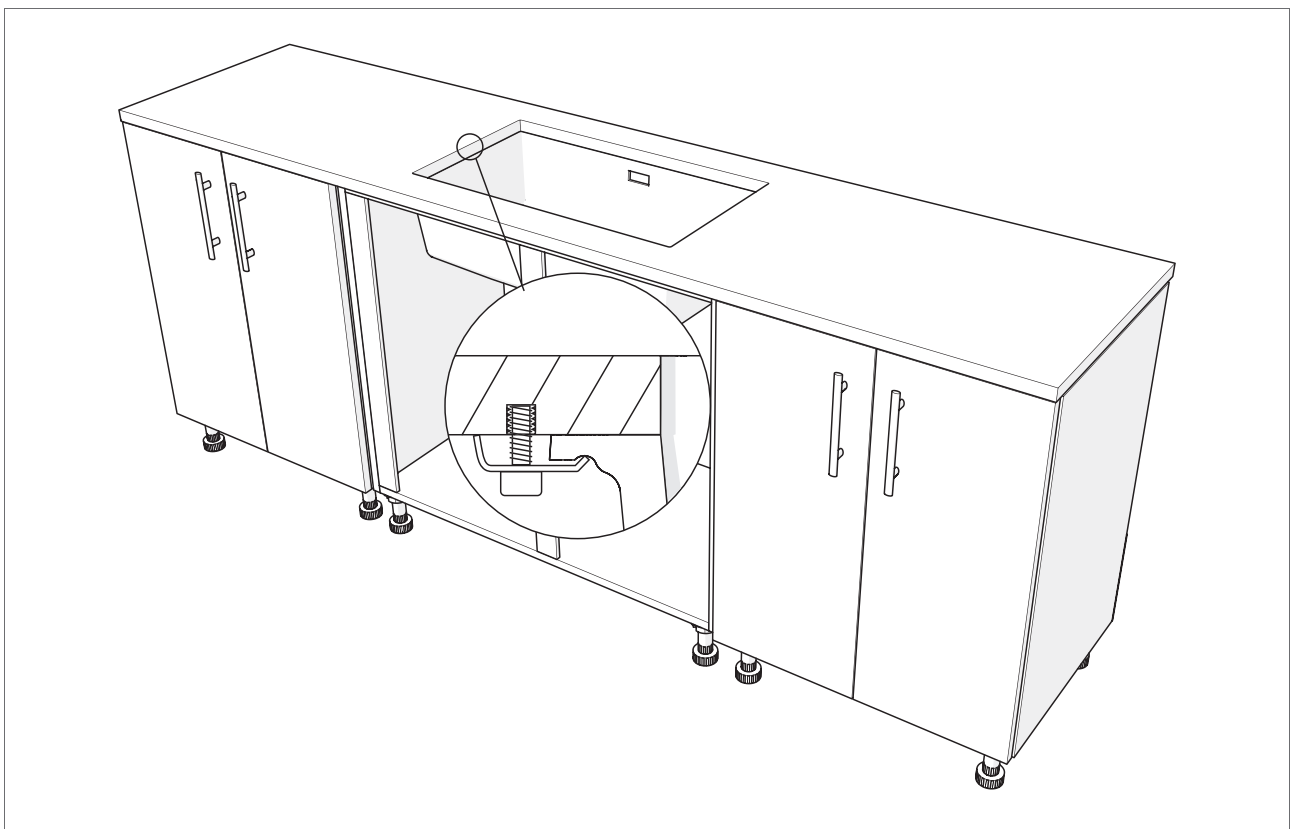
4.3 PACKAGE CONTENTS



4.4 TECHNICAL DRAWINGS



4.5 UNDERMOUNT SETUP

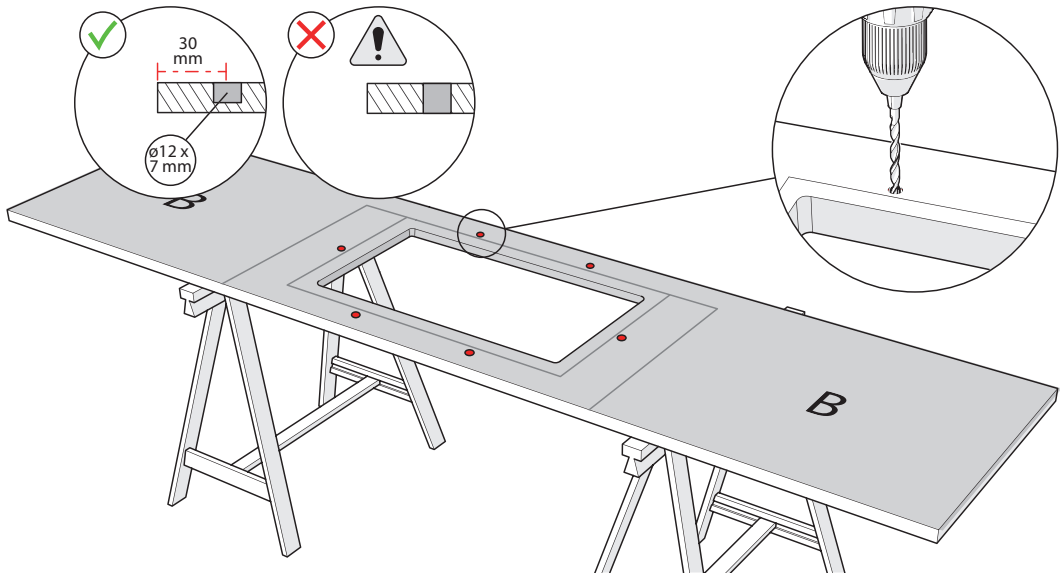


⚠ WARNING

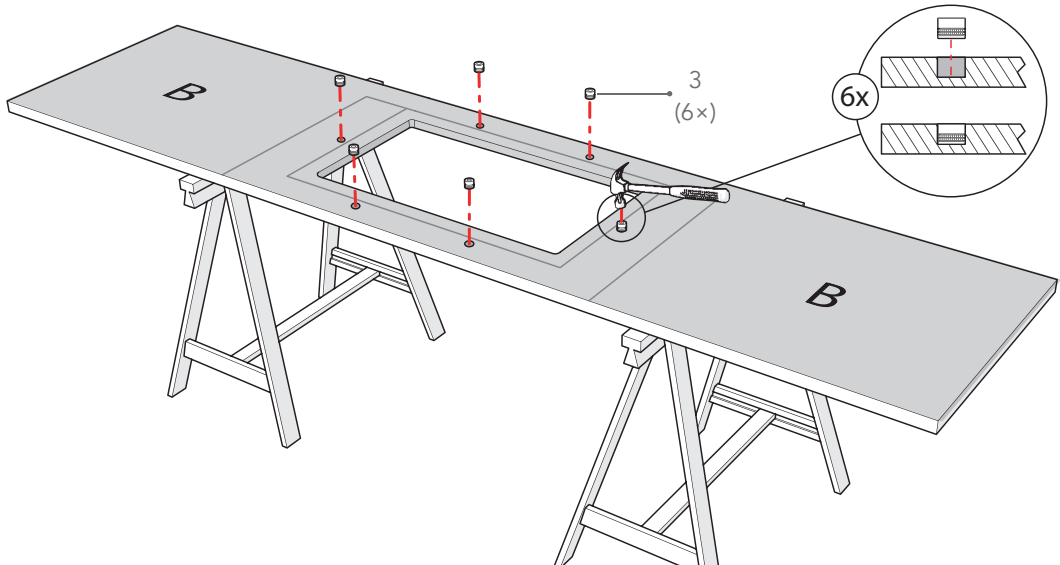
- Always wear safety goggles and gloves when installing the sink to prevent personal injury.
- Inspect sink for damage prior to beginning installation.
- Metal edges may be sharp.
- Use caution when handling.
- Follow all local plumbing and building codes.

1	<p>Drill six \varnothing 12mm and 7mm deep holes in the marked points using a drill with a straight helical bit.</p> <p>⚠ CAUTION</p> <p>Do not drill all the way through the worktop.</p>
2	<p>Insert 6 threaded inserts (not included) into the 7mm deep holes, using a hammer.</p> <p>⚠ CAUTION</p> <p>Be careful not to damage the worktop.</p>
3	Protect the edges of the cut using masking tape.
4	Protect the inside of the sink using masking tape.
5	Apply PU glue to the top of the sink edge.
6	Gently place the sink on the bottom of the worktop.
7	Check the alignment of the sink to the cut.
8	<p>Secure the sink to the worktop with six M6 x 12mm bolts (not included) using the provided clamps.</p> <p>⚠ CAUTION</p> <p>Only use a screwdriver to secure the bolts, an electric drill might damage the worktop.</p>
9	Flip the worktop upright.
10	Place and align the worktop on your kitchen cabinets.
11	Install the overflow drain.
12	Install the drain plug.
13	Connect the overflow drain to the drain plug.
14	Install the plumbing to connect the drain plug to the main drainage system.
15	Place the overflow cover cap and basket plug.
16	Carefully remove the applied masking tape and clean the worktop with water and mild detergent. After cleaning, rinse thoroughly with clean water, preferably warm, to remove any cleaning agent residual.

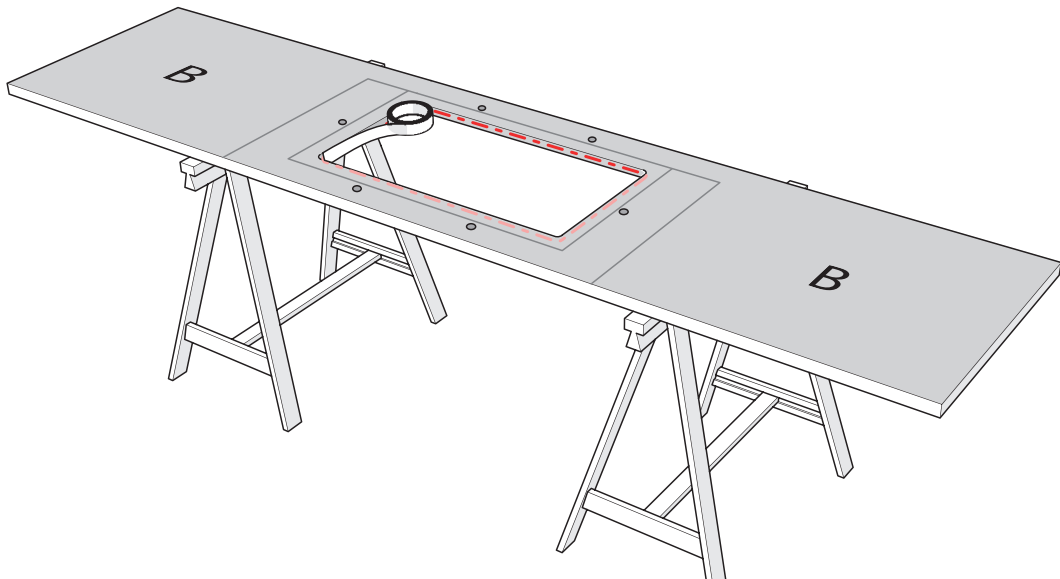
1



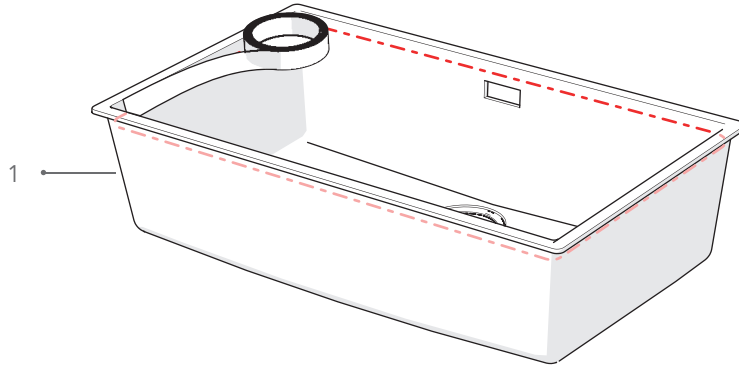
2



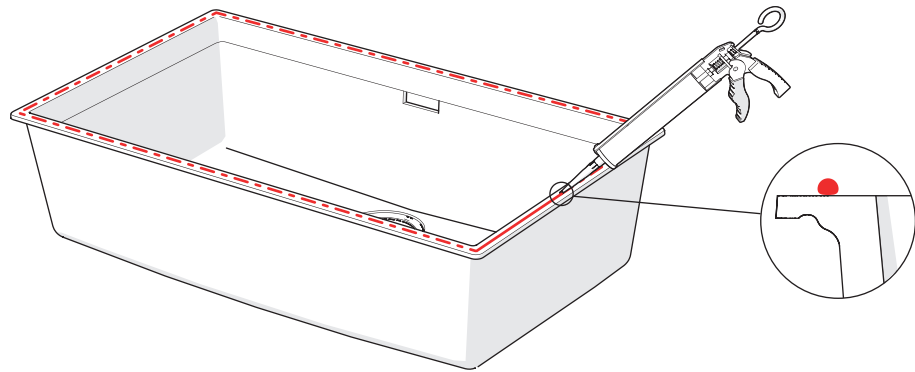
3



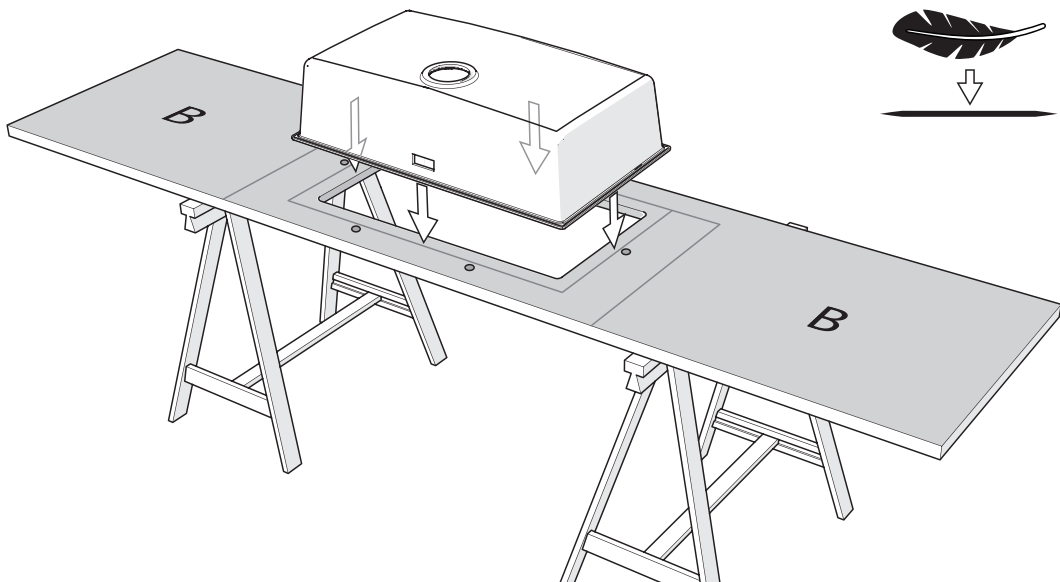
4



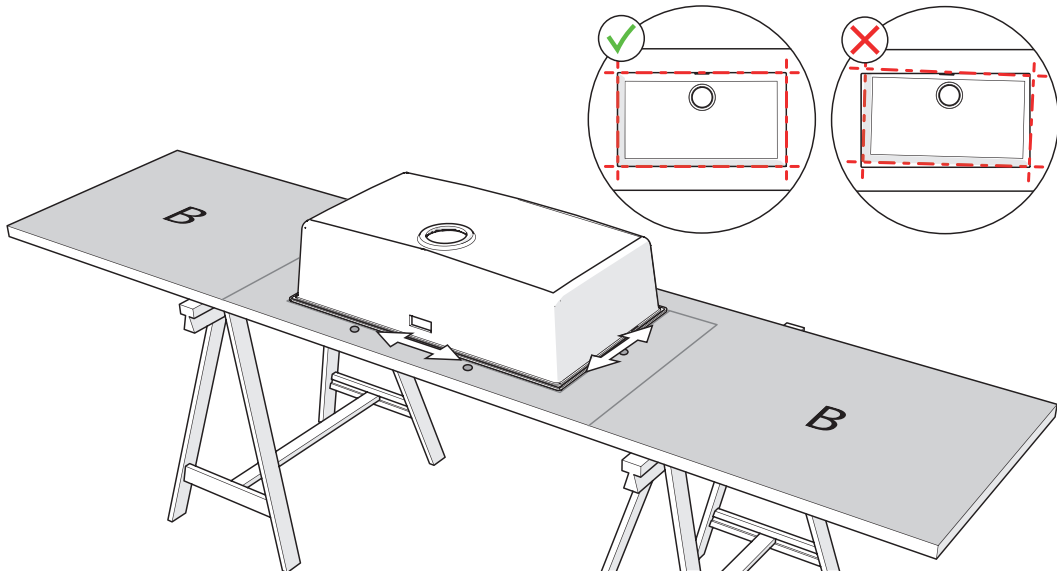
5



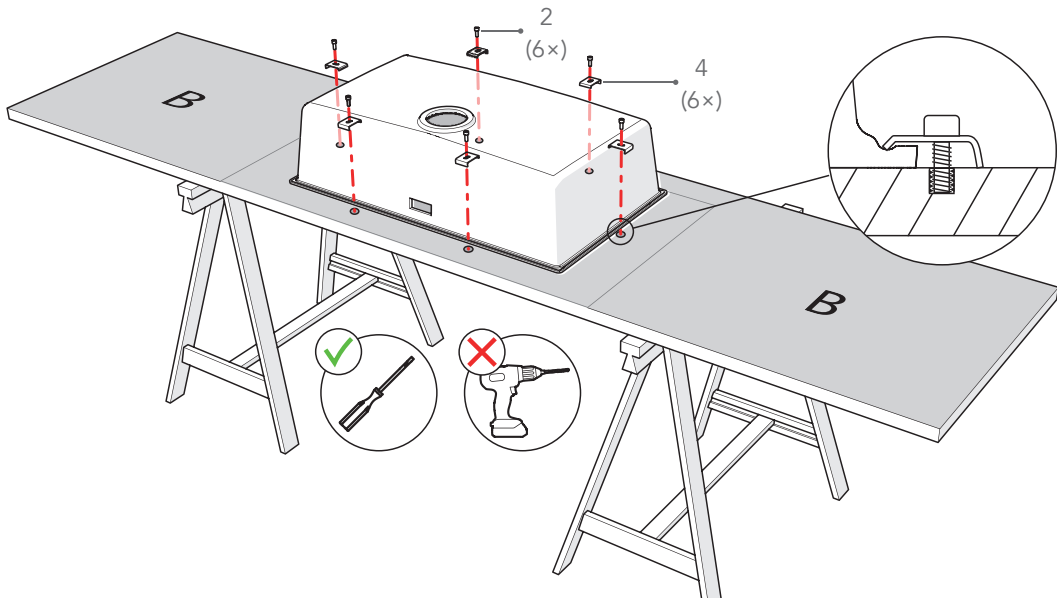
6



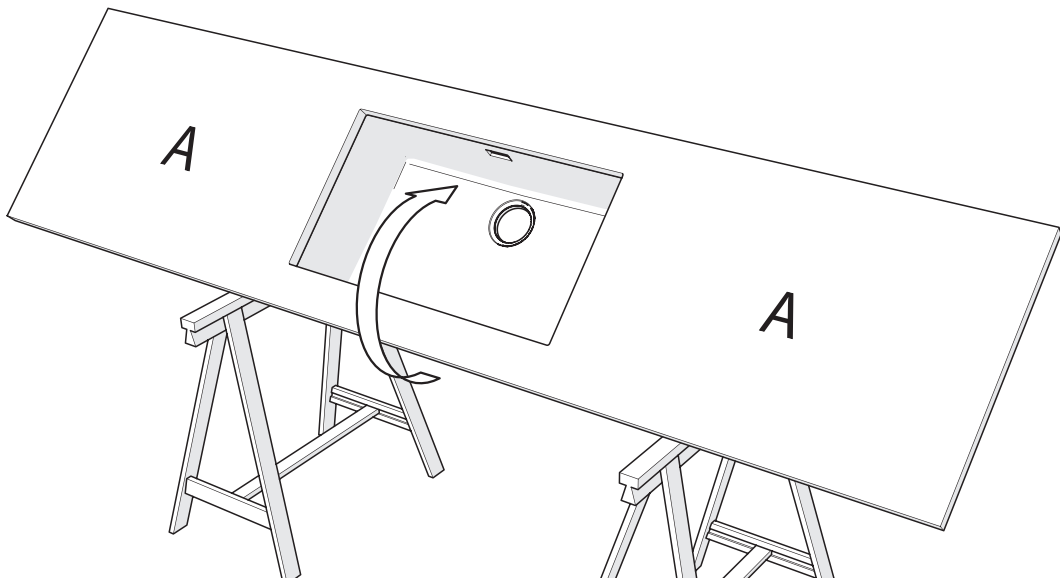
7

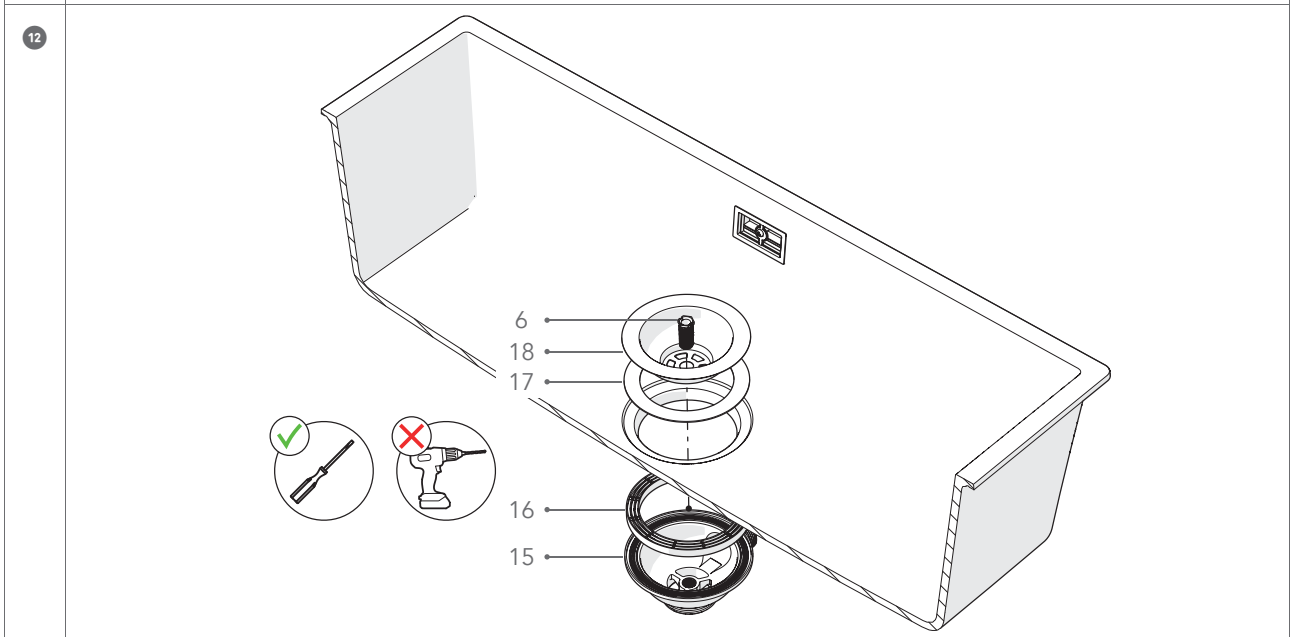
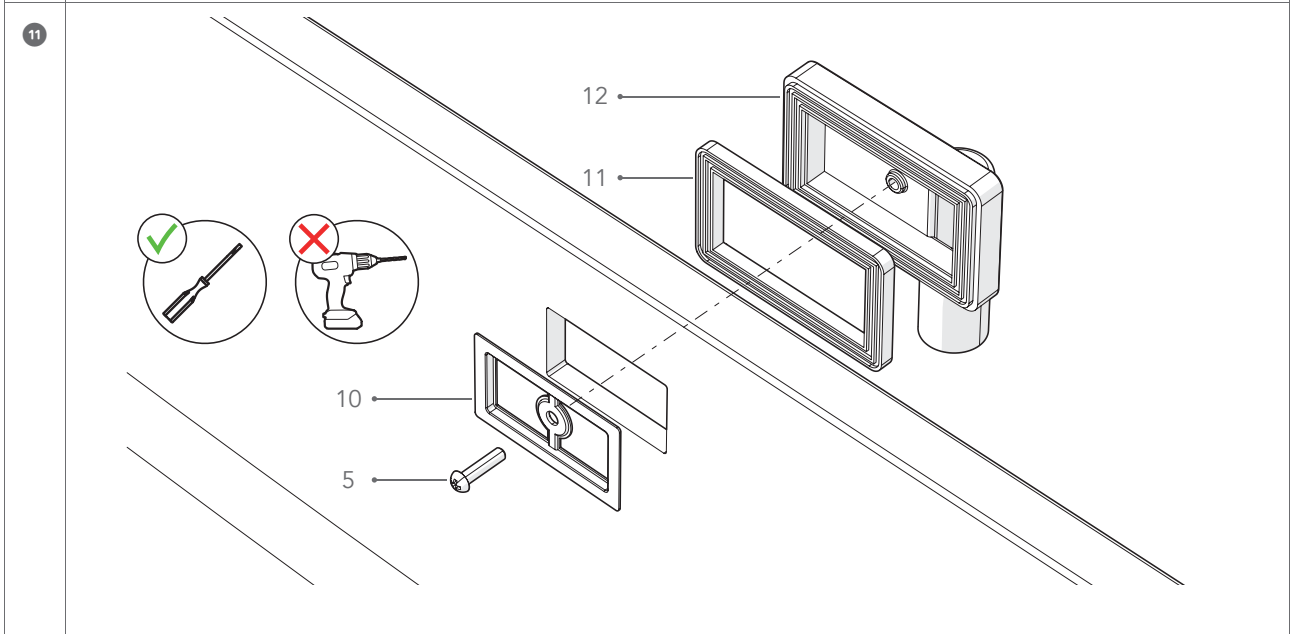
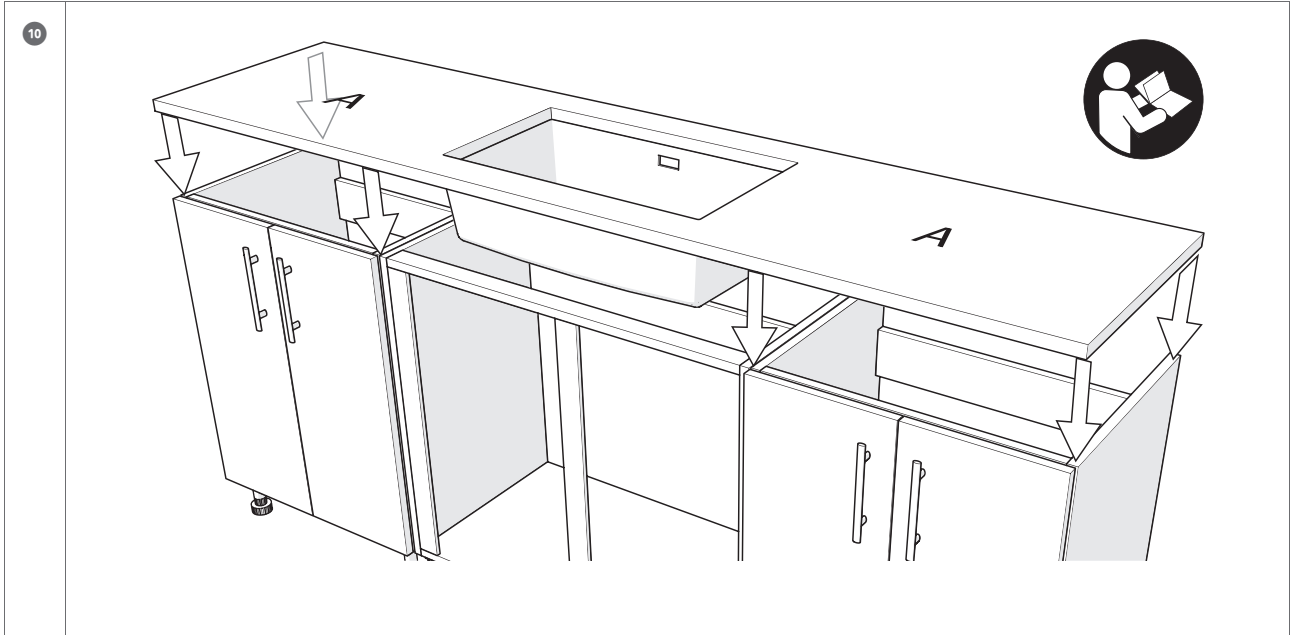


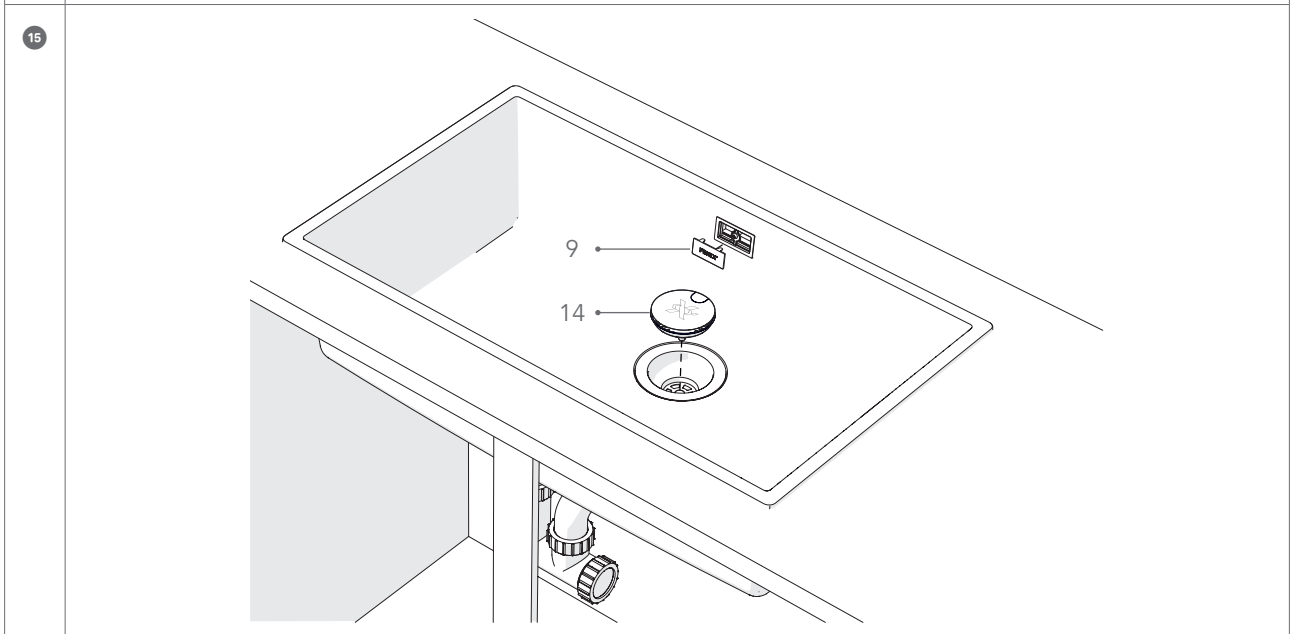
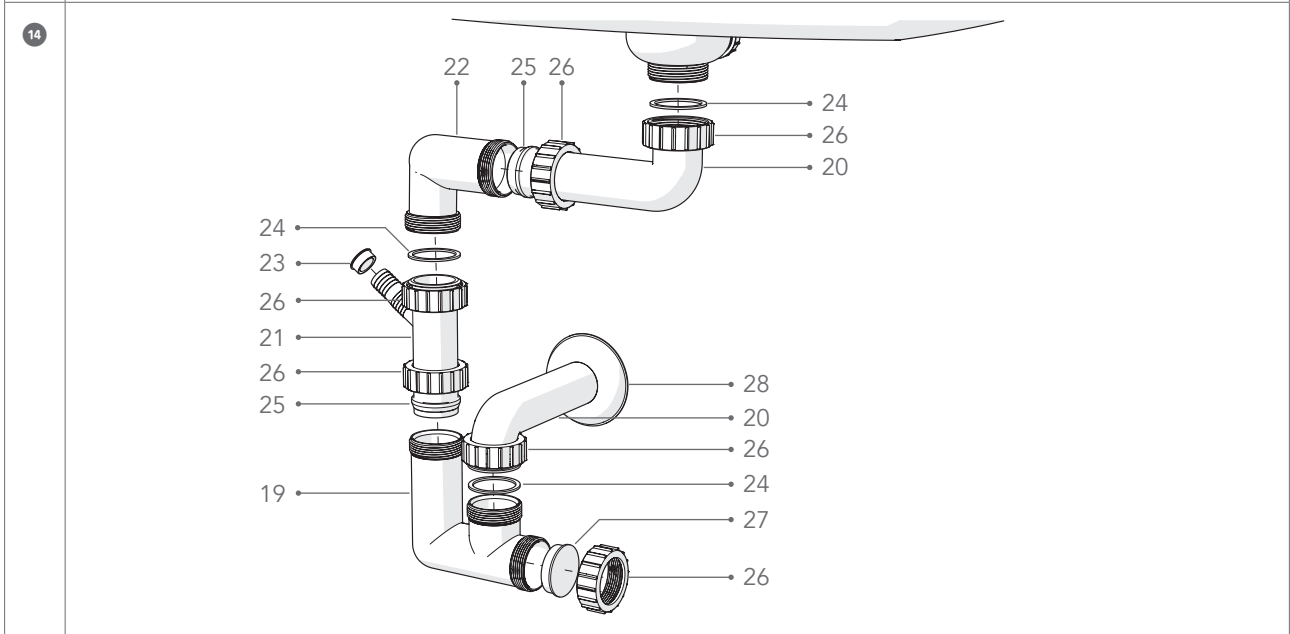
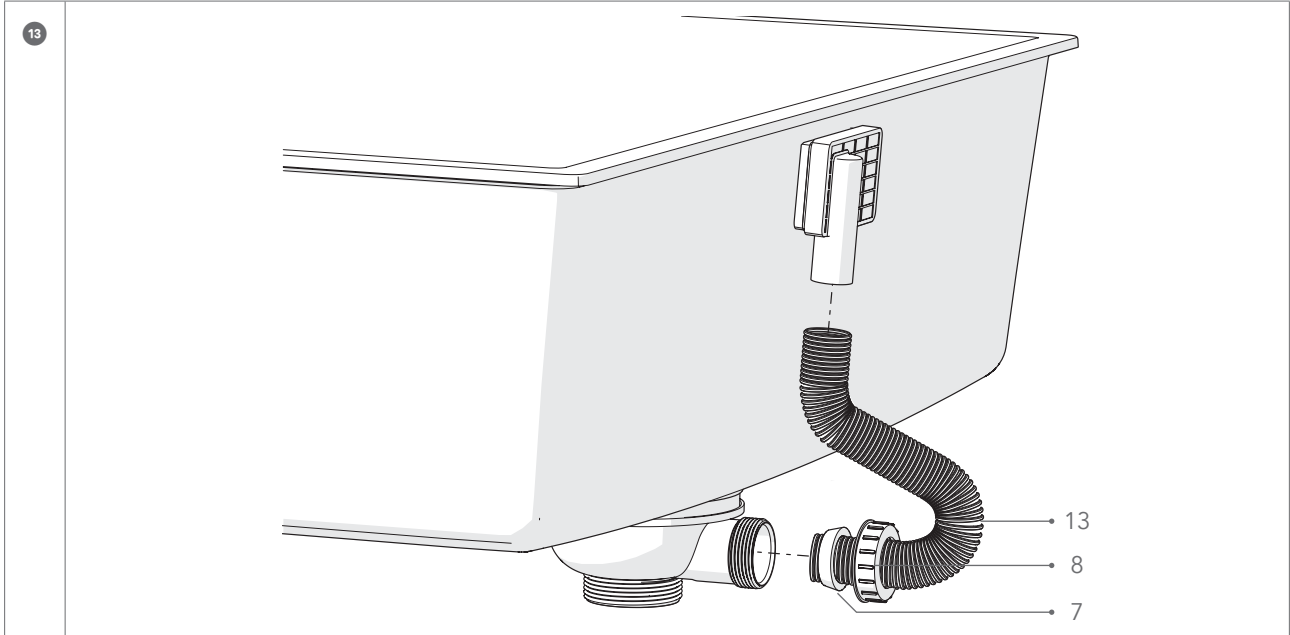
8



9







DISCLAIMER

This document gives general recommendations. This document serves as a general guide to good practice and constitutes no form of warranty or representation as to fitness for purpose in respect of the products and processes described in it. Any information or products contained within this document must be verified and tested for suitability by the user for his or her particular purpose or specific application. Consideration needs to be given to local or specific circumstances. The content of this document reflects our knowledge and experience at the time of publication. The information provided in this document is solely indicative. We are unable to warrant the accuracy and completeness of this information. No rights can be derived from the information provided; the use of the information is at your risk and responsibility. This document does not guarantee any properties of our products. We do not warrant that the information in this document is suitable for the purpose for which you consult it. The document does not contain any design, structural calculation, estimate or other warranty or representation that may be relied on. Colours used in our communications (including but not limited to printed matter) and in samples of our products may differ from the colours of the products to be supplied. Our products and samples are produced within the specified colour tolerances and the colours (of production batches) may differ, even if the same colour is used. The viewing angle also influences the colour perception. Customers and third parties must have a professional adviser

inform them about (the suitability of) our products for all desired applications and about applicable laws and regulations. We reserve the right to change (the specifications for) our products without prior notice. The newest version of the document replaces all previous versions. We advise that the newest version may contain technical changes that must be taken into account when using the products. The latest version of the document may be consulted on our website. You should always check whether an updated version of the document is available. Any warranty on the products may be voided if the (contents of the) latest version of this document, which may be updated from time to time, is not (properly) followed. We have made every effort to ensure the accuracy of the information in this document, but we cannot be held liable for any oversights, inaccuracies or typographical errors. To the maximum extent permitted under the applicable law, we shall not be liable (neither contractual nor non-contractual) for any damage arising from or related to the use of this document, except if and to the extent that such damage is the result of wilful misconduct or gross negligence on our part. All our oral and written statements, offers, quotations, sales, supplies, deliveries and/or agreements and all related activities are governed by our general terms and conditions which can be downloaded from our website. All intellectual property rights and other rights regarding the content of this document (including logos, text and photographs) are owned by us and/or our licensors.



KITCHEN SINKS

Made in Italy.

Arpa Industriale S.p.A.
Via Piumati, 91
12042 Bra (CN) - Italy
Tel. +39 0172 436111
info@fenixforinteriors.com

fenixforinteriors.com